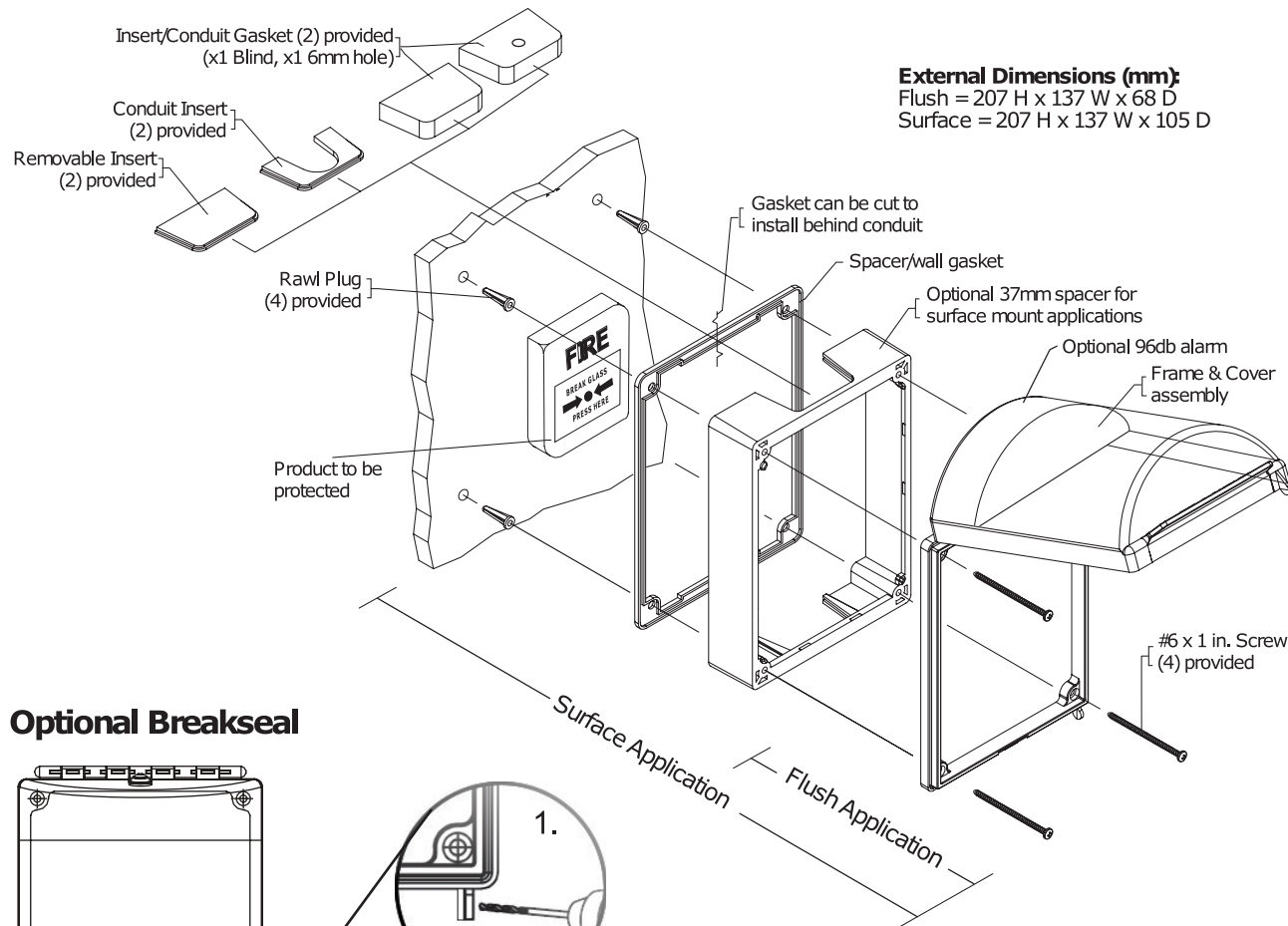
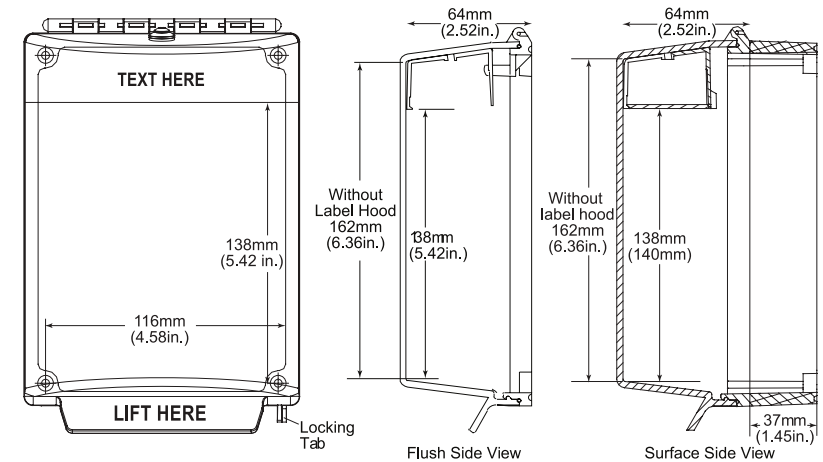


INSTALLATION OF C530 COVER SERIES



External Dimensions (mm):
 Flush = 207 H x 137 W x 68 D
 Surface = 207 H x 137 W x 105 D



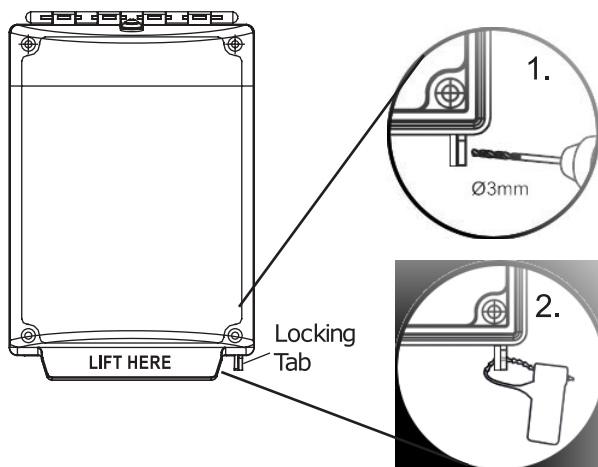
PRODUCT DIMENSIONS

INSTALLATION NOTES

Before drilling mounting holes place spacer, frame and cover over your device. Position it so device functions properly and cover closes with no interference.

1. Mark the position for the 4 fixing screws. Drill the holes using a 6mm masonry drill bit and fit the cover with the wall fixings provided.
2. If using a Surface mounted spacer, please note that it provides cable entry facilities, for conduit, cable and trunking. A 37mm depth spacer is supplied as standard.
3. Where the weather gasket is required, position this between the spacer (surface) and the wall.
4. Ensure the servicing pin is removed from the alarm unit on those fitted with an integral sounder. The pin should be retained in the event any maintenance is carried out.

Optional Breakseal



Replacing the battery

To replace the 9V PP3 battery in the alarm unit, insert the servicing pin, remove the two screws on the underside of the alarm unit and replace battery. Reassemble ensuring to remove the servicing pin. The pin should always be retained.

Installation Tools Required:

1. 6mm Masonry Drill Bit
2. Philips Head Screw Driver