

Indoor Key Switches



STANDARD MODELS:

Access Control Key Switches:

SSP 10725 - Green Housing, 2 Position Key Switch Double Pole, DPC Normally Open

SSP 10730 - Green Housing, 2 Position Key Switch Double Pole, DPC Normally Closed

General Application Key Switches:

SSP 10709 - Red Housing, 2 Position Key Switch Single Pole, SPC

SSP 10713 - White Housing, 2 Position Key Switch Single Pole, SPC

SSP 10711 - Yellow Housing, 2 Position Key Switch Single Pole, SPC

PRODUCT OVERVIEW

A highly versatile range of attractive key switches combining unique design, quality and value, with or without a protective cover or pre-alarm. These aesthetically appealing, low/high voltage switches fit any standard UK-type switch socket box, and are quick and easy to install.

Dual Mount

Designed to fit either flush or surface installations (35mm black surface back box included).

Models for applications where casual activation is discouraged are available. The switch can only be activated with a key.

All models are available in a variety of colours with space for corporate branding, function marking and operating instructions. A number of standard models are available for quick delivery.

It is advisable to protect your switch with a cover. These protective covers consist of a tough polycarbonate material and are available with or without integral sounder. The cover adds an extra measure of protection against damage and tampering.

KEY FEATURES

General Information

- Highly versatile range of attractive switches combining unique design, quality and value.
- One year guarantee on electromechanical and electronic components.

Design

- Recessed key barrel prevents risk of damage.

Construction

- Extremely attractive, high value look and feel: space available for function marking and operating instructions.

Installation

- Operating temperature -20°C (-4°F) to 65°C (149°F).

Electronics

- Wide range of operating voltages up to 250 volts AC 6 Amps: Rated 1A 115VAC & 1A 24VDC.

Options

- Other models available - indoor and outdoor Push Buttons.
- Low profile, heavy-duty terminations - available in SPC & DPC arrangements.
- It is advised to protect the Key Switch with an STI Protective Cover.

Indoor Key Switches

Dimensions and Technical Information

Housing Colour & Mounting Options:

- Red - Dual Mount (includes 35mm back box)
- Green - Dual Mount (includes 35mm back box)
- Yellow - Dual Mount (includes 35mm back box)
- White - Dual Mount (includes 35mm back box)
- Blue - Dual Mount (includes 35mm back box)
- Orange - Dual Mount (includes 35mm back box)

Switch Type Options:

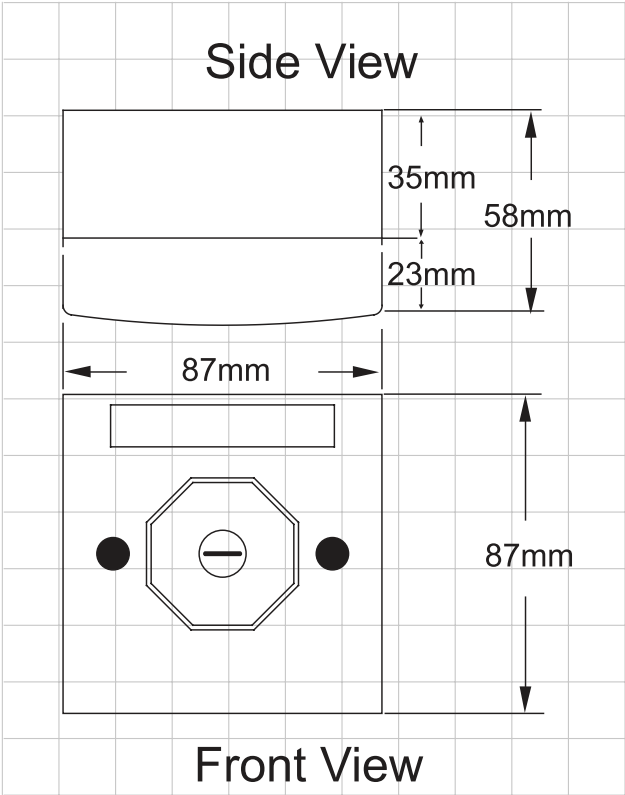
- 2 Position Key Switch Single Pole
- 2 Position Key Switch - Key Trapped in 'on' position
- 2 Position Key Switch Double Pole
- 3 Position Key Switch

Electrical Arrangement Options:

- Single Pole Changeover
- Double Pole Normally Open
- Double Pole Normally Closed
- 3 Position Key Switch Arrangement

NB: Please view Electrical Conditionals below.

Key Switch Models	
Proof Voltage	>750 VDC
Current Carrying Capacity (non switching)	5A
Contact Rating (Switching Resistive Load)	1A 115VAC / 1A 24VDC
Insulation Resistance	>999M0hm
Initial Contact Resistance	<20m0hm
Minimum Operating Life	10,000 cycles
Contact Material	Silver plated brass
Terminal Material	Plated brass
Housing & Back Box Material	PC/ABS
Terminal Conductor Size	0.5mm - 2.5mm
Operating Temperature	-20°C to 65°C



Electrical Arrangement Options & Conditionals:

0

Single Pole Changeover:
Available if '2 Position Key Switch Single Pole' or '2 Position Key Switch - Key Trapped in 'on' position' Switch Type Option is selected

1

Double Pole Normally Open:
Available if '2 Position Key Switch Double Pole' or '2 Position Key Switch - Key Trapped in 'on' position' Switch Type Option is selected

2

Double Pole Normally Closed:
Available if '2 Position Key Switch Double Pole' or '2 Position Key Switch - Key Trapped in 'on' position' Switch Type Option is selected

3

3 Position Key Switch:
Only available if '3 Position Key Switch' Switch Type Option is selected.

Cover Options:

PLEASE NOTE: Covers are ordered separately.
Other covers are available.



C93 Series

Designed to retrofit over MCP's and buttons, preventing accidental activation.



289 Series

Designed to retrofit over MCP's and buttons, preventing both accidental or malicious activation, available with or without an integral alarm.



C53 Series

Indoor and outdoor dome covers designed to retrofit over MCP's and emergency push buttons. Available with or without an integral sounder.